

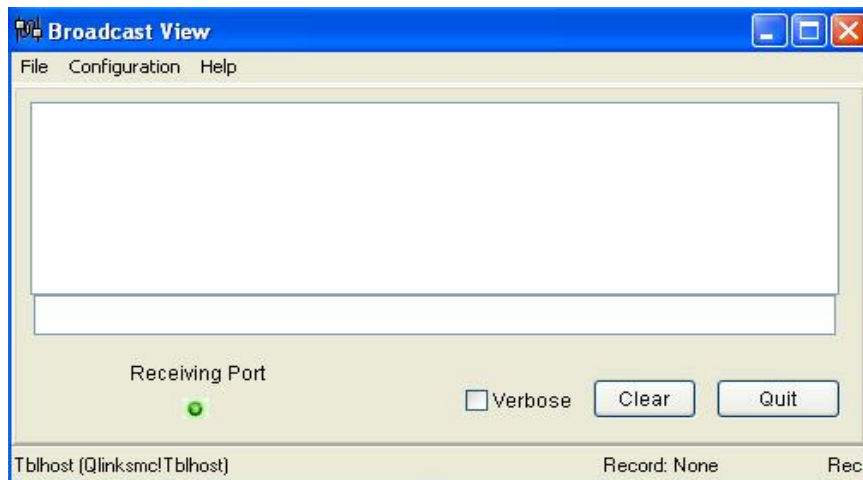


**QlinksMC
Translation Software**

Multi Cast Paging

QlinksMC is a single input software package. The outputs is sent via a Local Area Network to a paging transmitter or transmitters. The QlinksMC program was developed to execute in the background of the program it is interfacing with for IP Paging. It requires only a few selections for setup. The key to having the program operate properly is ensuring the correct IP addresses are located. The location program is built into the program, you only need to select the correct function from the configuration menu.

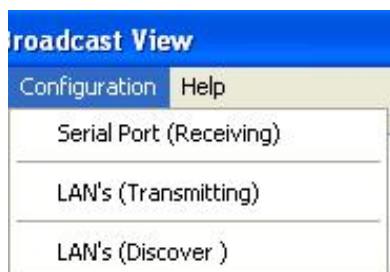
When the software is installed the QlinksMC icon will be placed on your desktop. When you activate the QlinksMC software, it will automatically minimize. Simply click on the tool bar and the program will open so you can complete the configuration.



Main Screen

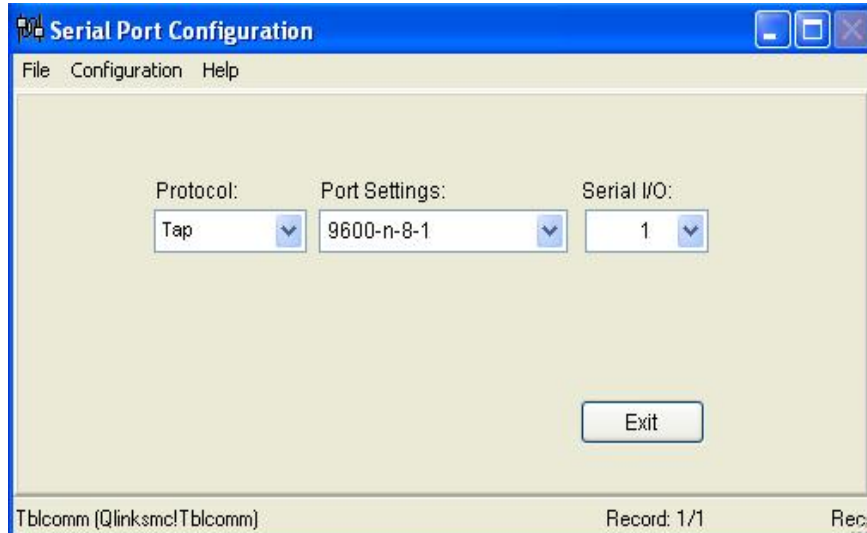
Serial Port Configuration (Input)

1. Select configuration from the menu.



2. Select Serial Port (receiving)

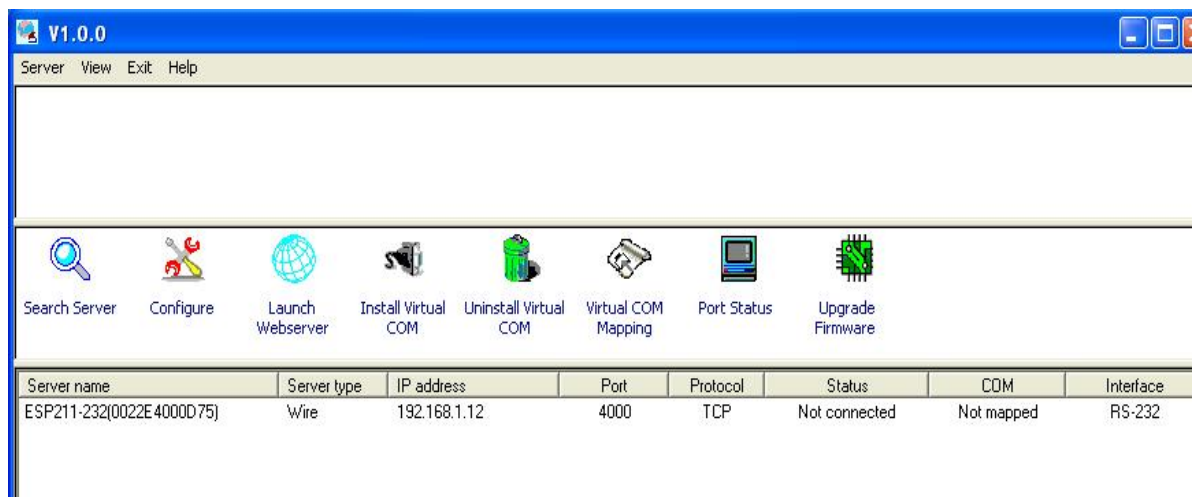
Note: **Most settings will not have to be changed.**



2. Select the Serial Port from the drop down menu that data will be present.
3. Select the Port Settings from the drop down menu.
4. Protocol should be TAP.
5. Select Exit.

IP Address Discovery

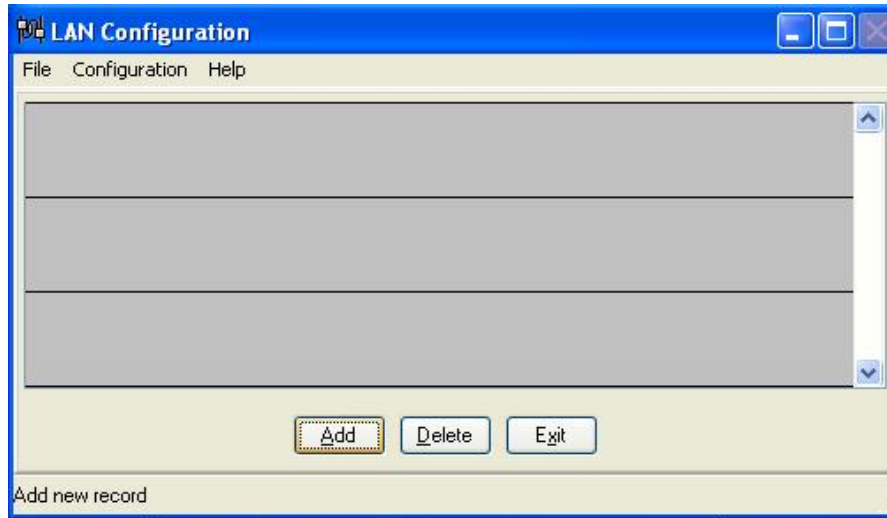
1. Select Configuration from the menu
2. Select LAN's (Discovery)
3. The below screen will appear.



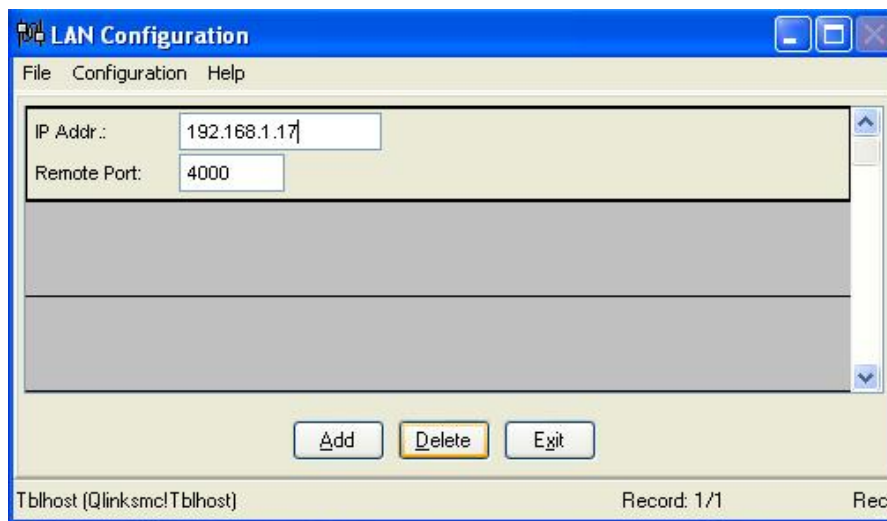
3. The program will automatically locate all the Serial to Ethernet adapters installed on your local area network. Once located it will display the IP Address and Port number.
4. You should copy these numbers down, as you will need to enter them into the QlinksMC program.
5. Exit from the locator program.

LAN Transmitter Install

1. Select LAN's Transmitter from the configuration menu.

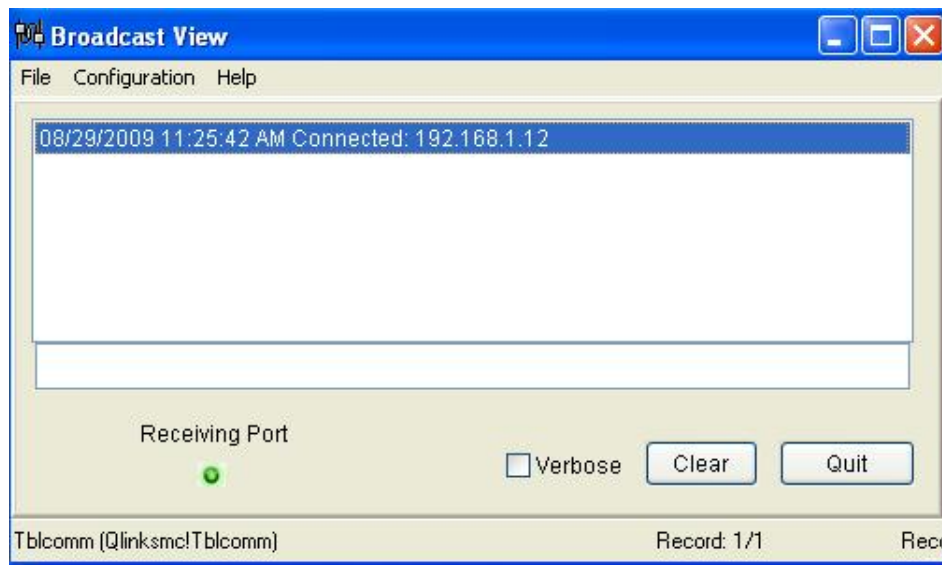


2. Select Add and the following screen will appear.



3. Enter the IP Address of the first transmitter on the Local Area Network.
4. The Remote Port is set to 4000. This should not be changed unless your network will not work with that number. If it needs to be changed you must use the location program to edit the Adapter's port.

5. Select Add to install additional Transmitter Adapters.
6. When completed, select Exit.
7. The following screen will appear. It will show all Transmitter Adapters on the network and if they are connected along with the IP Address.



8. When completed, Select [-] from the top right of the screen. This will minimize the program.
9. Each time the program is activated it will automatically minimize.

Connection Diagram

