



# **IF600**

## **Programming Manual**

# IF600 Programming Manual

---

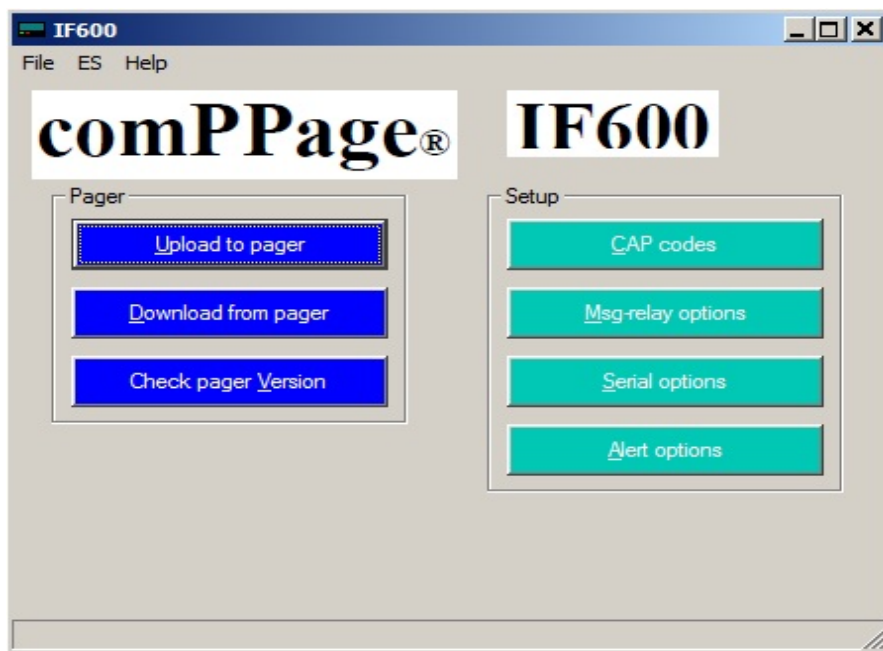
The IF600 is a hardware solution for attaching Radio Paging to a non-standard protocol output host. The IF600 will accept 600 input strings of 80 characters each and output a custom message string to the local paging transmitter. Each output string can be sent to a specific Pager ID or Group ID. In addition that ID can activate any or all of the four onboard form C relays. The relay(s) can be activated by a key word or phase.

## Selecting Program

After installing the program from the CD that came with your equipment you are ready to program the IF600 to receive a data stream and match a word or phase.

## Setup

1. Connect the supplied RS232 Null Modem cable to COM #1.  
**Note: All programming is accomplished via Com Port #1**
2. Connect the power cable to the IF600. You will hear a beep.
3. Run the IF600 program.

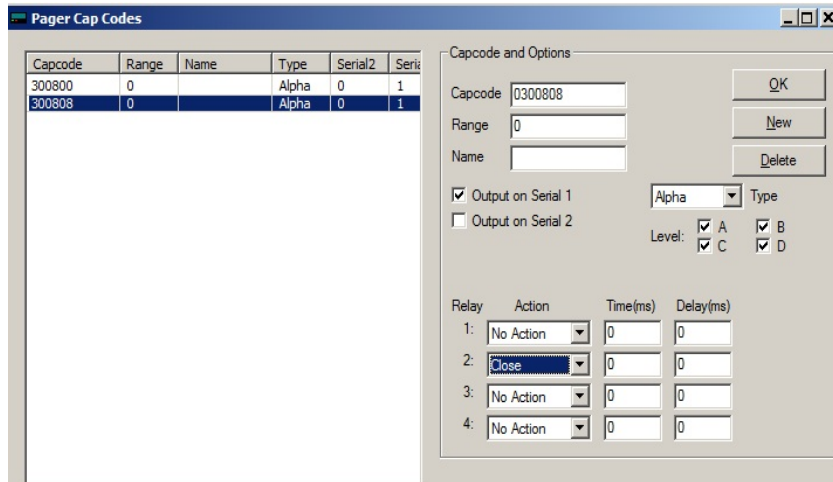


**IMPORTANT:** IF UNIT HAS BEEN PREVIOUSLY PROGRAMMED, ALWAYS SELECT DOWNLOAD FROM PAGER BEFORE PROCEEDING. THIS WILL ENSURE THE CURRENT DATA IS NOT LOSTED.

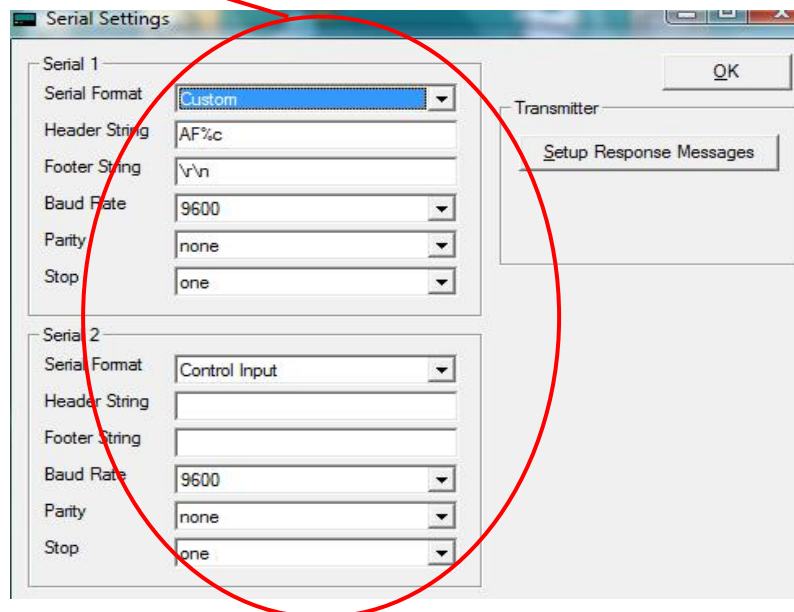
# IF600 Programming Manual

## Programming

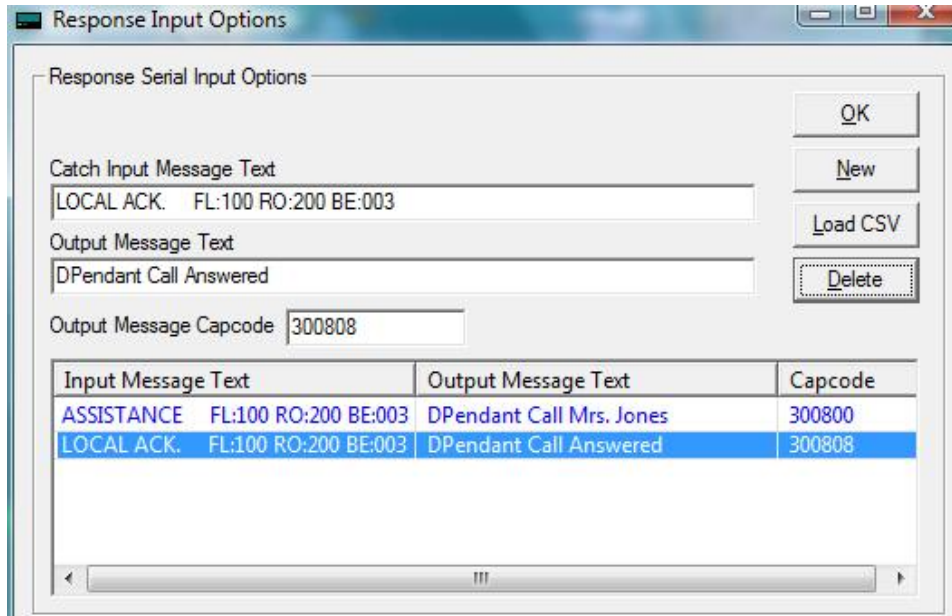
1. On the main screen of the IF600 Program, select [CAP CODES].
2. Select [NEW] and enter the cap codes used for paging.
3. Select [Output on Serial 1], [Alpha] pager type and check all levels.
4. Select OK.



5. Select [Serial Options]
6. Select Serial 1 is set to [Custom].
7. Select Serial 2 is set to [Control Input]
8. **Do not change this data without taking to technical support.**



9. Select **[Setup Response Messages]**



10. Select **[NEW]** and enter the Input word or string to be matched. Maximum of 80 characters.  
 [NOTE: **The Input Message MUST be an EXACT match**]
11. Enter the **Output message** you want to send to the pager when the string is matched.
12. Enter the **Beep Type** [A,B,C or D] at the beginning of the output message.
13. Enter the Message Cap Code for each message. The cap code must be from the list entered in the Cap Code screen.
14. To delete an entry, Select the entry to be removed and click on the **[DELETE]** button
15. Select **[NEW ]** for each line to be matched.
16. When completed select **[OK]** and **[OK ]**.
17. If a large amount of data is to be enter, you can create a Excel spread sheet.
18. Open Exel and Select Open, locate the template **[Test \_Messages]** in the C:\Program Files\comppage\If600\data directory. This file is a CSV (comma delimited File).
19. Make changes and save using a different name. **[DO NOT ERASE OR WRITE OVER THIS FILE]**

	A	B	C
1	input	output	capcode
2	Test Input Message 1	Test Output Message 1	120002
3	Test Input Message 2	Test Output Message 2	120003
4	Test Input Message 3	Test Output Message 3	120004
5	Test Input Message 4	Test Output Message 4	120005

## Relay Operation

The Four on board Form C relays can be activated one of two ways. The Relays will respond to a Pager Cap Code or a Word/Phase.

### 1. Cap Code Programming

On the Cap Code Screen Select the Cap Code you want to use and then select the Relay and function. [Open, Close, Momentary Closure, Delay and the time]

2. Activating a N/O contact using a specific cap code.
  - a. Connect the wiring to the Common and N/O output pin.
  - b. Select [Close] for the activation cap code.
  - c. Select [Open] for the de-activation cap code

The screenshot shows two parts of the software interface. On the left is a table with columns: Capcode, Range, Name, Type, Serial2, and Serial1. The table contains three rows: 300800 (Alpha, 0, 0, 1), 300808 (Alpha, 0, 0, 1), and 1 (Alpha, 0, 0, 0). On the right is a 'Capcode and Options' dialog box. It has fields for Capcode (300800), Range (0), and Name. There are buttons for OK, New, and Delete. Below these are checkboxes for 'Output on Serial 1' (checked) and 'Output on Serial 2' (unchecked). A dropdown menu is set to 'Alpha' with a 'Type' label. Under 'Level', there are four checkboxes: A (checked), B (checked), C (checked), and D (checked). At the bottom, there is a table for relay actions:

Relay	Action	Time(ms)	Delay(ms)
1:	Close	0	0
2:	No Action	0	0
3:	No Action	0	0
4:	No Action	0	0

### 3. Key Word or Phase Programming

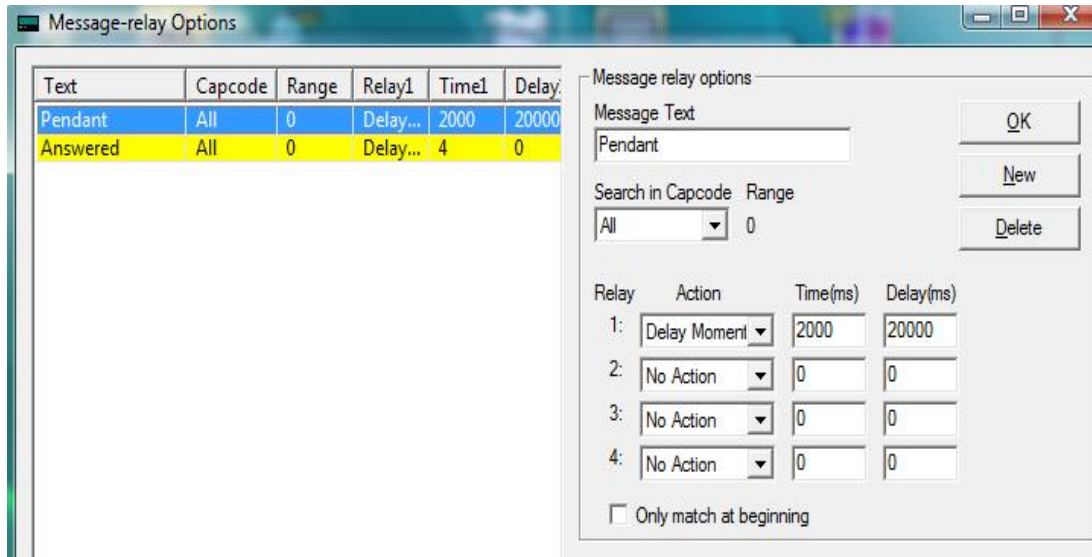
This function is used if you want to escalate notification to another pager ID by using the Dry Contact in the Scope CX5A paging transmitter or other dry contact input devices.

Example: A certain input triggers an output that if not responded to, needs to be escalated to Another staff member after 5 minutes.

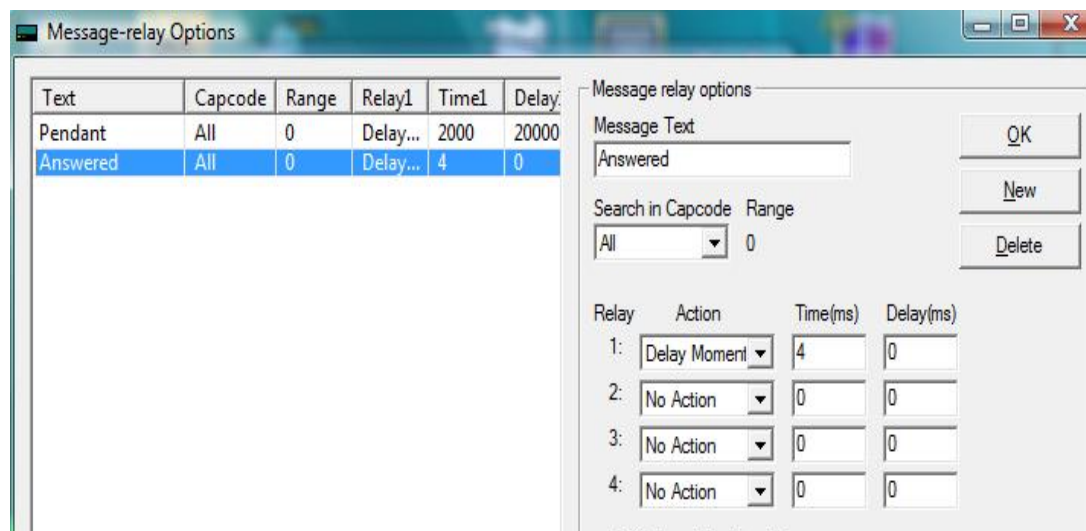
#### Setup

1. Select the [**Message-relay Options**]
2. Select [**New**]
3. Enter the **COMPLETE** translation string you want to trigger the relay, in the [**Message Text**] window.
4. Select the relay and [**Delay Momentary**].
5. In the [**Time(ms)**] enter the closure time. (how long the contact will be in the closed State if not reset. Recommended 3000mS (3 Second)).
6. In the [**Delay(ms)**] enter how long after the key string has been detected will The relay wait till it reacts. 60,000 = 1 min, 180,000 = 3 min., 300,000 = 5 min.

# IF600 Programming Manual



7. Select [**New**].
8. Enter the **RESET** string in the Message Text window that the relay will react to when received.
9. Select the same Relay that was selected in step 4 and enter [**2**] in the Time(ms) window.
10. Select [**OK**].

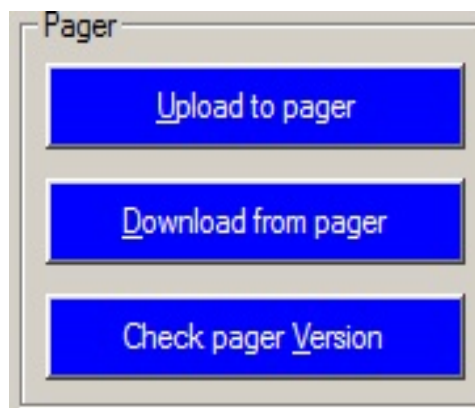


## Writing Data to IF600

Once all the programming is completed, **Select File, Save As** and save in the Data directory. If necessary you can retrieve the data and reload the IF600.

Write to IF600

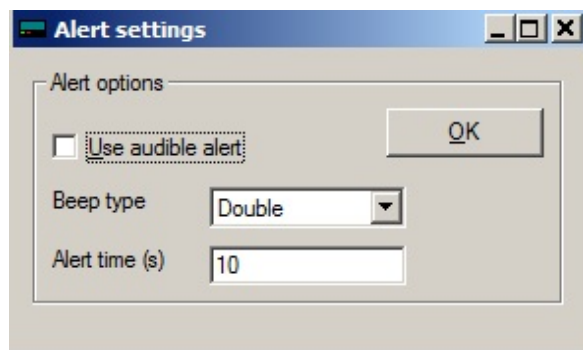
1. From the main screen select [**Upload to Pager**]
2. Follow the screen Prompts.



## Alert Option

The unit can be program to notify each time data is received.

1. Select [**Alert Option**].
2. Place a check mark by [**Use Audible Alert**] and select from the drop down menu the type [**Double or Single**].
3. When completed, select [**Upload to Pager**].

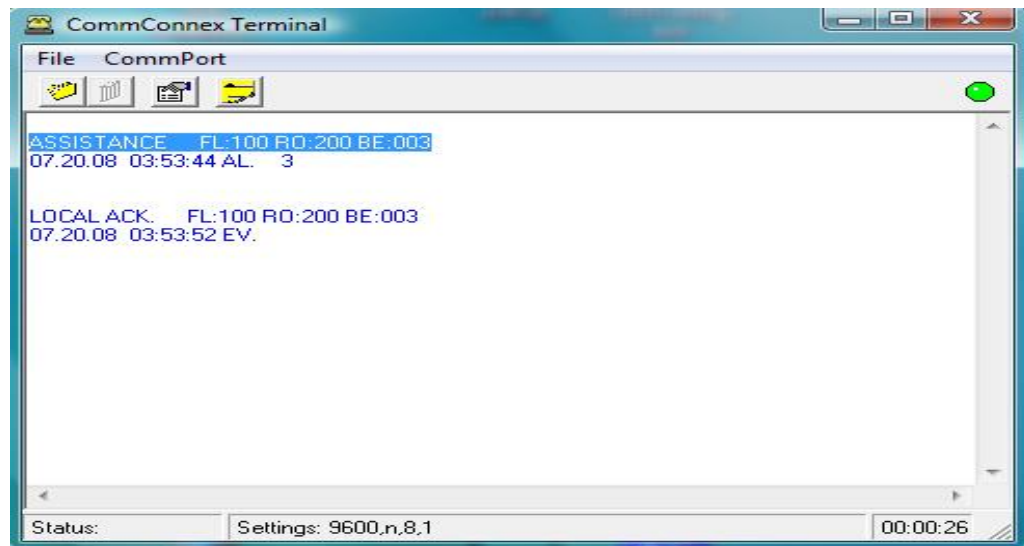
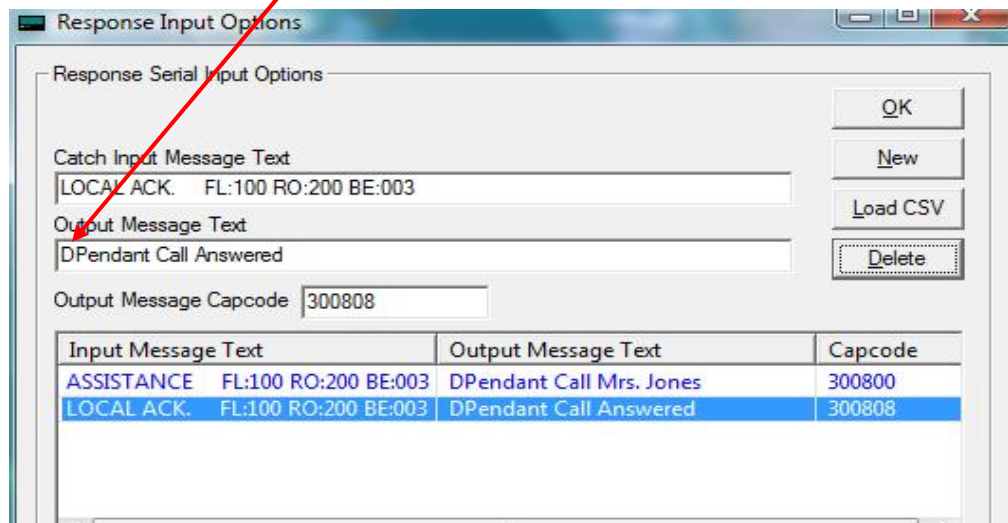


## Creating Input Response Options

If large amounts of data is to be inputted, using some of the following procedures will increase the accuracy and reduce the time required.

### Cut and Paste

1. Load the comPPage's Terminal Program that is on the IF600 CD.
2. Select the communication port and set the baud rate. (This will be the input from the Host Equipment you want to use for string matching).
3. Activate the IF600 Program and select **Serial Options – Set Response Messages**.
4. Both programs should be on your screen.
5. Create an alarm from the host. The Alarm should appear on the CommConnex Program.
6. Highlight the All of the data and select copy.
7. On the IP600 select New and paste the data in the Input Message window.
8. Type in the beep type (A,B,C or D) at the beginning of the output message, and enter your Cap Code.
9. Continue till all the data is entered.





## Technical

Communications Port 1 – RS232 Output and IF600 Programming

Communications Port 2 – RS232 Input only Matching String

Relay 1- 4 Output Port - 25 Pin Connector

Input Power - 12VDC <2A

Input Cables - 10 Foot F/F Null Modem

---

### Relay 1- 4 Output Pins

#### **Relay 1**

**25-Pin**  
Common – 1  
Normally Closed – 2  
Normally Open - 3

#### **Relay 2**

**25-Pin**  
Common – 5  
Normally Closed – 7  
Normally Open – 6

#### **Relay 3**

**25-Pin**  
Common - 9  
Normally Closed - 11  
Normally Open - 10

#### **Relay 4**

**25-Pin**  
Common – 13  
Normally Closed – 15  
Normally Open – 14