



ConneXions 5

CX4A/CX5A

RS232 Radio paging System (Two Port, Mains Version)

PROGRAMMING MANUAL



ConneXions 5 Mains, Two Port Version

Programming

The ConneXions 5 can be programmed by the end-user using the supplied Microsoft Windows™ Compatible Scope Configuration Utility program ConX-Lite. The software will allow the user to upload protocols changes on each serial port using the supplied files. Additionally messages and condition of dry contact inputs can be modified.

NOTE: FILES FOR THE CX4 and CX5 ARE DIFFERENT. DO NOT USE FILES WITH A 4 IN THE FILE NAME FOR THE CX5 and DO NOT USE THE FILES WITH A 5 IN THE FILE NAME FOR THE CX4.

Install

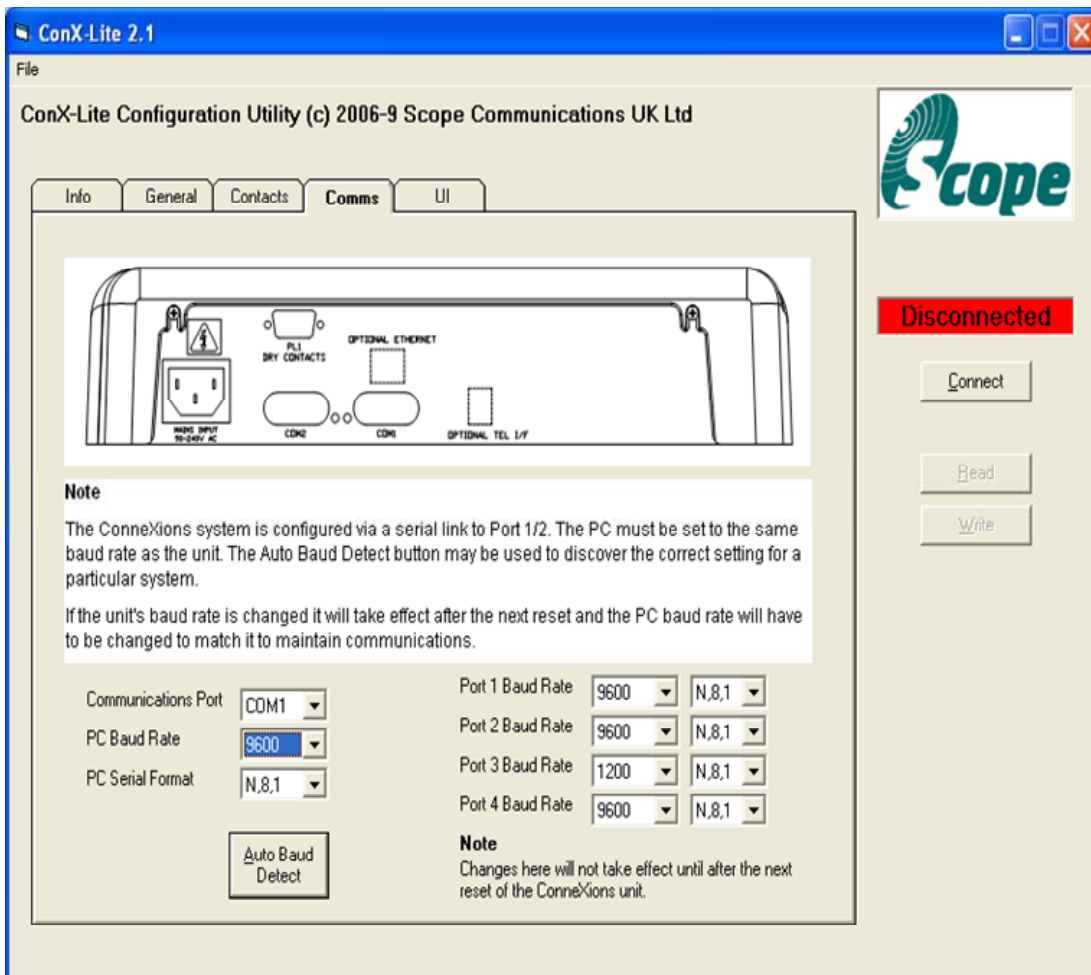
1. After installation of the Conx-Lite program is complete you must copy the files from the data directory on the cd to the C:\Program Files\ConX-Pro Configuration
2. The program is now installed.



ConneXions 5 Mains, Two Port Version

Communications

1. Connect the supplied null modem interconnect cable to the ConneXions 5 and the computer.
2. Run the ConX-Lite Configuration program.
3. When the program first activates, the word **Disconnected** in red will appear under the Scope logo.
4. All programming changes to the unit will be accomplished via communications port 1.
5. Select the **Comms** tab.
6. If the user is not sure what the baud rate of the system to be programmed is, click on the button **Auto Baud Detect**. This will set the program communication port 1 to the correct baud rate.
7. Select **Connect**. The word disconnect will change to **Connected** in green.
8. Before you can enter a new configuration, you must select **Read**, this read the unit and allow the **Write** button to be selected.
9. The unit is now ready to be programmed.



ConneXions 5 Mains, Two Port Version

Programming

Refer to the below chart for the correct file to be loaded. Each file has been configured and tested. No Modifications to these files are possible. If additional configurations or changes must be made, contact comPPage, Inc. at sales@comppage.com or call 877.969.6976.

File Name: scopeallcx5.conx9

Protocol	Port	Port Setting	Type	Pager Baud	Alert	Base ID
Scope	Com Port #1	9600 n-8-1	Alpha	1200	D	None
Scope	Com Port #2	9600 n-8-1	Alpha	1200	D	None

File Name: scopeallcx55.conx9

Protocol	Port	Port Setting	Type	Pager Baud	Alert	Base ID
Scope	Com Port #1	9600 n-8-1	Alpha	512	D	None
Scope	Com Port #2	9600 n-8-1	Alpha	512	D	None

File Name: comp2allcx5.conx9

Protocol	Port	Port Setting	Type	Pager Baud	Alert	Base ID
Comp2	Com Port #1	9600 n-8-1	Alpha	1200	A	0010000
Comp2	Com Port #2	9600 n-8-1	Alpha	1200	A	0010000

File Name: comp2allcx55.conx9

Protocol	Port	Port Setting	Type	Pager Baud	Alert	Base ID
Comp2	Com Port #1	9600 n-8-1	Alpha	512	A	0300000
Comp2	Com Port #2	9600 n-8-1	Alpha	512	A	0300000

File Name: comp2telecx55.conx9

Protocol	Port	Port Setting	Type	Pager Baud	Alert	Base ID
Comp2	Com Port #1	9600 n-8-1	Alpha	512	A	0300000
TeleAlarm	Com Port #2	9600 e-7-1	Alpha	512	A	None

File Name: tapallcx5.conx9

Protocol	Port	Port Setting	Type	Pager Baud	Alert	Base ID
Tap	Com Port #1	9600 n-8-1	Alpha	1200	A	None
Tap	Com Port #2	9600 n-8-1	Alpha	1200	A	None

File Name: scopetelecx55.conx9

Protocol	Port	Port Setting	Type	Pager Baud	Alert	Base ID
Scope	Com Port #1	9600 n-8-1	Alpha	512	None	None
TeleAlarm	Com Port #2	9600 e-7-1	Alpha	512	None	None

File Name: tapscopecx5.conx9

Protocol	Port	Port Setting	Type	Pager Baud	Alert	Base ID
Tap	Com Port #1	9600 n-8-1	Alpha	1200	None	None
Scope	Com Port #2	9600 n-8-1	Alpha	1200	D	None

File Name: scopecomp2cx5.conx9

Protocol	Port	Port Setting	Type	Pager Baud	Alert	Base ID
Scope	Com Port #1	9600 n-8-1	Alpha	1200	D	None
Comp2	Com Port #2	9600 n-8-1	Alpha	1200	D	0600000

ConneXions 5 Mains, Two Port Version

File Name: taptap2cx5.conx9

Protocol	Port	Port Setting	Type	Pager Baud	Alert	Base ID
Tap	Com Port #1	9600 n-8-1	Alpha	1200	A	None
Tap(no logoff)	Com Port #2	9600 n-8-1	Alpha	1200	A	None

File Name: scopecomp1cx55.conx9

Protocol	Port	Port Setting	Type	Pager Baud	Alert	Base ID
Scope	Com Port #1	9600 n-8-1	Alpha	512	D	None
comp1	Com Port #2	9600 n-8-1	Alpha	512	A	0500008

File Name: comp1allex5.conx9

Protocol	Port	Port Setting	Type	Pager Baud	Alert	Base ID
Comp1	Com Port #1	9600 n-8-1	Alpha	1200	A	0200008
Comp1	Com Port #2	9600 n-8-1	Alpha	1200	A	0200008

File Name: comp1allex55.conx9

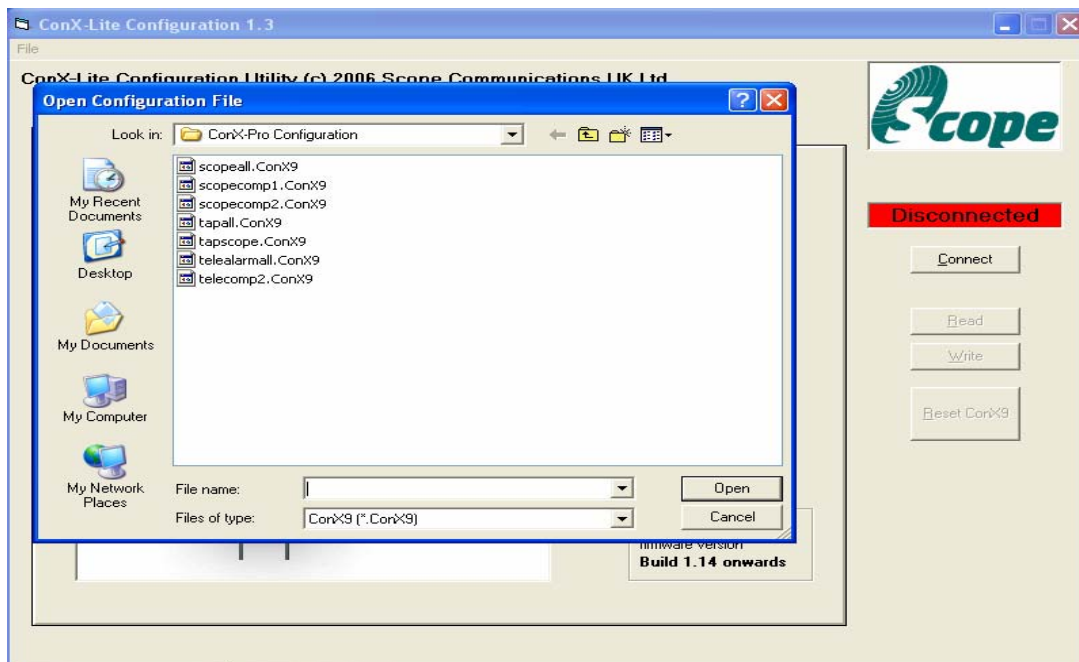
Protocol	Port	Port Setting	Type	Pager Baud	Alert	Base ID
Comp1	Com Port #1	9600 n-8-1	Alpha	512	A	0300800
Comp1	Com Port #2	9600 n-8-1	Alpha	512	A	0300800

File Name: taptelecx55.conx9

Protocol	Port	Port Setting	Type	Pager Baud	Alert	Base ID
Tap	Com Port #1	9600 n-8-1	Alpha	512	none	none
TeleAlarm	Com Port #2	9600 e-7-1	Alpha	512	none	none

Loading File

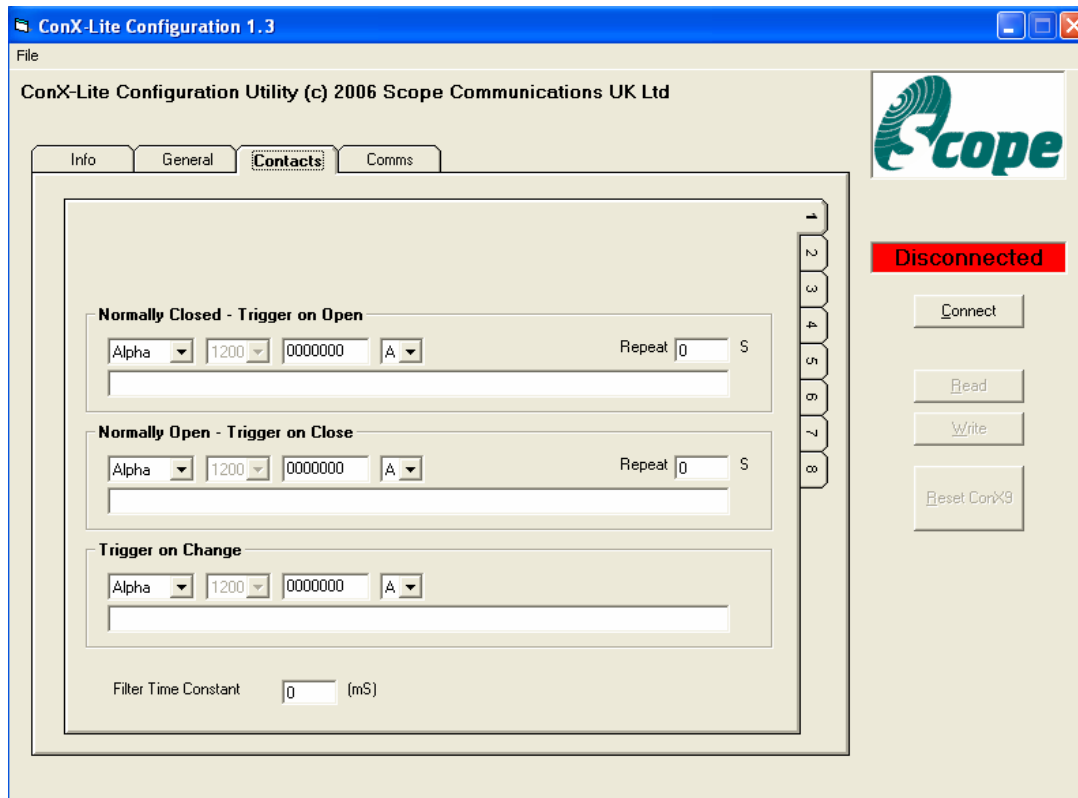
1. Click **Read**, the program will read the file configuration that is currently in the unit and now the **Write** selection will be available.
2. Select **FILE, OPEN**.
3. Select the file to be loaded and click **OPEN**. On the General Tab Select the correct baud rate.
4. Click on **Write**.
5. After the file has been uploaded, the program will reset the unit automatically.
6. The Connexions 5 or 4 now has the protocol and port configurations as show in the chart above.



ConneXions 5 Mains, Two Port Version

Dry Contact Configuration

1. Select the **Contacts** tab.
2. Select the contact to be configured by clicking on the tab at the right.
3. Each contact has three options; **Open, Closed or Toggle** (change of state).
4. Enter the required data for each contact.
5. After all data has been entered, click on **Write**, this will upload the changes to the unit. **This will not effect the programming of the protocols.**



Read/Write/Connect/Reset Conx9

1. Read – Read data from unit connected.
2. Write – Write all changes to unit connected.
3. Connect – Will connect unit to software program.
4. Reset Conx9 – The Conx9 must be reset each time changes are made. If not, the changes will not take effect. There are two ways to reset the unit.
 - 1.) Power the unit off and on,
 - 2.) Click the reset conx9 button.

ConneXions 5 Mains, Two Port Version

DRY CONTACT MESSAGES (must be specified when ordering)

No.	MESSAGE (max 80 characters alphanumeric or 20 characters numeric)
1	
2	
3	
4	
5	
6	
7	
8	